

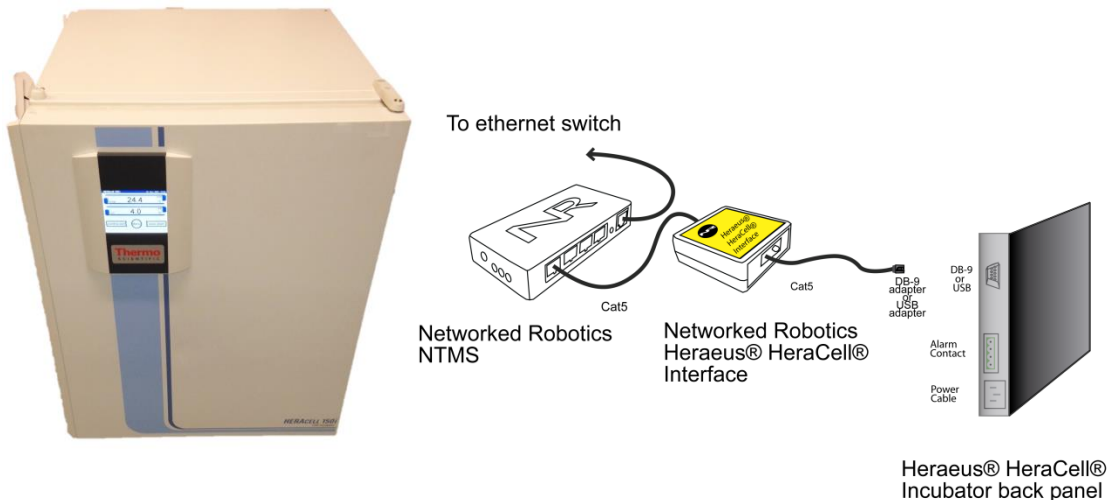


Networked Robotics Corp.  
825 Chicago Ave, Suite F  
Evanston, IL 60202, USA  
Toll free: (877) FRZ-TEMP  
(877) 379-8367

info@networkedrobotics.com  
support@networkedrobotics.com  
NetworkedRobotics.com

## Networked Robotics Interface to Thermo Fisher Scientific® Heraeus® HeraCell and Cytomat® Incubators (#30026 and #30044), HeraCell VIOS incubators and Forma 4000 Series Incubators (#30031)

*These products enable remote network data collection from Thermo Fisher Scientific® Heraeus® HeraCell, Cytomat® and Thermo Fisher Scientific® Forma® 4000-series incubators. They are designed for use with Networked Robotics' NTMS (Network Telemetry Monitoring System) hardware and Networked Robotics' Tempurity™ System software. The Tempurity System is engineered for data collection and monitoring in FDA-regulated environments including the pharmaceutical, medical, and food industries.*



### Description

*This product enables real-time network data collection and monitoring of trending temperature, carbon dioxide concentration, oxygen concentration, and relative humidity status by a single direct connection to the data communications port of the incubator. Some HeraCell and Cytomat incubators support temperature and carbon dioxide concentration only depending on the options ordered. With minor exceptions, the data that is collected and stored in the Tempurity System is the same as the data that is displayed on the front panel of the incubator.*

*Product #30026 is designed for use with HeraCell 150i and 240i models. Product #30044 is designed for use with HeraCell 150, 240, and Cytomat incubators. Product #30031 is designed for use with the Heraeus Vios line, models 160i and 250i and also all 4000-series Forma water-jacketed incubators.*

## ***Packing List***

This package includes the hardware that you will need in order to connect the incubator to the NTMS.

- (1) Thermo Fisher Scientific Heraeus Heracell Interface
- (1) Heracell serial interface connector (9-pin) (#30026 and #30044 only)
- (1) USB A male to USB B male cable (#30031 only)
- (1) MicroUSB power supply (#30031 only)
- (1) RJ-45 coupler for extensions
- (1) CAT5 cable

## ***Hardware Installation***

There are three major steps in the installation of this hardware:

- 1) Physical installation
- 2) Configuration of the Networked Robotics NTMS hardware
- 3) Manual testing of data collection via the network

Each of these steps, especially manual testing through the network, as described below, should be performed successfully before attempting to configure real-time data collection via the Tempurity System. Detailed information on configuring this “monitored device” through Tempurity is available in the Tempurity System’s User’s Guide (Networked Robotics document number “Tempurity-04-0006.5”) on the Networked Robotics web site.

### ***1. Physical Installation***

#### **Attaching the Heraeus Heracell Interface - NR Product #30026 and #30044**

Products #30026 and #30044 attach to the RS232 interface of Heracell and Cytomat incubators. If your product has only a USB port (Vios models) you must use Networked Robotics product #30031.

You will attach this Heracell interface hardware either to the back or side of the incubator. Secure the interface using the “dual-lock” backing provided. The “dual-lock” sticks best to metal (except aluminum) or plastic surfaces. It may not adhere as well to porous surfaces such as drywall, wood, or concrete.



Connect the interface to one of the four ports of an NTMS using the Cat5 cable as shown in the figure on the first page. The green light on the interface will illuminate once the NTMS port is connected. If not then check the connection to the NTMS and check that the NTMS is powered on.

Verify that the data collection port of the NTMS is set properly for data collection from a Thermo Forma incubator (see below for detailed instructions).

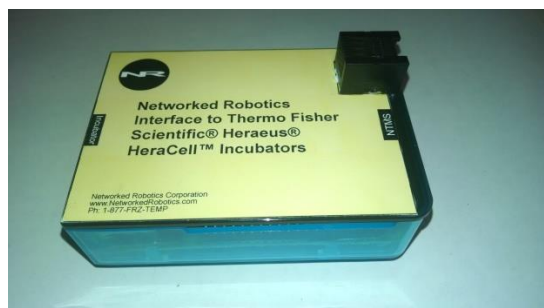
Connect the Cat5 cable from the Heracell Interface port marked “Incubator” to the RS232 adapter. Then Connect the RS232 adapter to the incubator’s serial port. This is located at the back of the instrument on the left side.

After a few minutes the yellow LED on the interface will illuminate indicating that the interface is getting data from the instrument. If the yellow light does not illuminate check that connections are correct and the baud rate is set properly on the incubator. The yellow light will only illuminate if the NTMS port is configured for the Heraeus instrument type as described below.

The red LED on the NTMS side of the interface will take one or two minutes to illuminate. It flashes at regular intervals when data is being sent from the interface to the NTMS network hardware.

### **Attaching the Heraeus Heracell Interface - NR Product #30031**

Connect the standard USB cable from the interface in any one of the four USB ports on the interface and plug the other end into the USB port on the incubator.



Connect the standard Cat5 cable from the top-mounted RJ45-jack on the interface labeled “NTMS” to one of the NTMS data jacks.

Connect the microUSB power supply to the interface.


### **Configuring the Incubator**


The all Heracell models with an “i” suffix must have communications data rates set via the front panel. Go to “Menu” then “Settings” then “Interface” to set the speed to “57600”. If the Incubator is set to the incorrect baud rate the red LED will not illuminate and data will not be received from the incubator. Other Heracell and Cytomat incubator models are factory set to the 9600 baud proper speed.

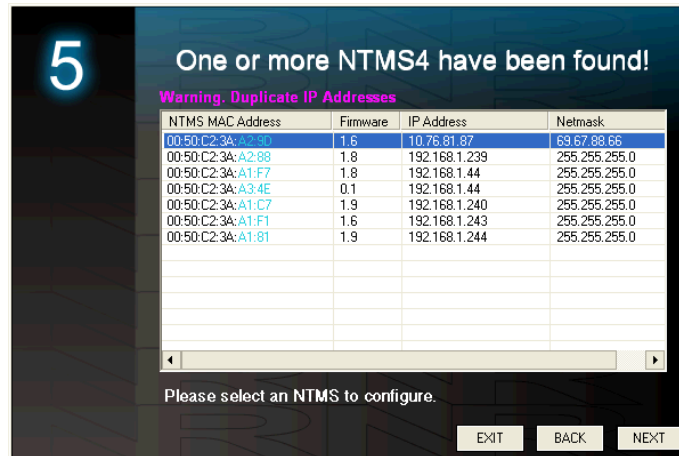
### **Extensions**

This interface can be extended to 300 feet from the Networked Robotics NTMS network hardware. You can easily extend the length of any connection using the included RJ-45 coupler and standard CAT5 network cable.

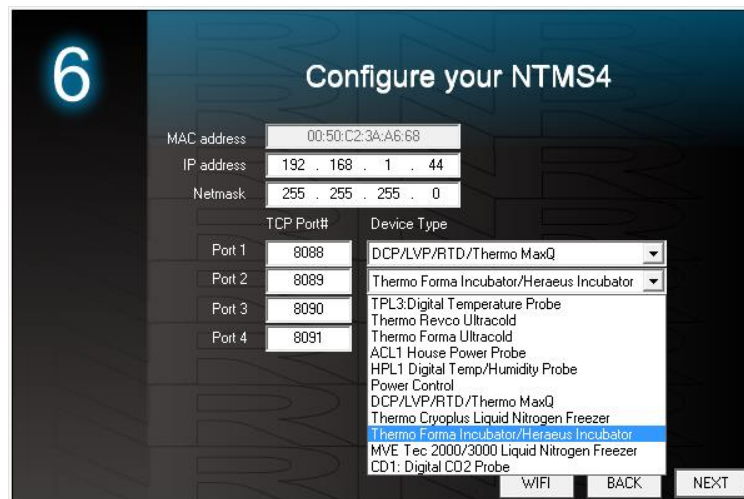
## **1. Configuring the NTMS for Data Collection**

Configure your NTMS network hardware for data collection from this instrument. This is done by running the latest version of the NTMS Configuration Wizard  from any PC that is on the same subnet as the NTMS to be configured. You can obtain the configuration wizard from the “download” section of the Networked Robotics web page. New sensor and interface types are being added periodically to the wizard so the screens below may change.

1. Run the wizard from the same local area network as the NTMS and verify that the NTMS is discovered. (NTMS hardware must be running firmware revision 1.6 or higher. If it is not, stop the installation and upgrade your NTMS hardware's firmware with the NTMS Upgrade Wizard  available from the Networked Robotics download-page.)



2. Select the NTMS, and proceed to the “NEXT” screen.
3. Enter the correct static IP address and subnet mask for your facility.
4. Click on the NTMS measurement port where the probe is connected, and under the “Device Type” drop down, select the Thermo Forma Incubator/ Heraeus Incubator option. Even though you choose Forma Incubators, the adapter is configured to work with HeraCell and Cytomat Incubators through the Networked Robotics’ Forma data interface type.



5. Click “NEXT” to complete the NTMS configuration.

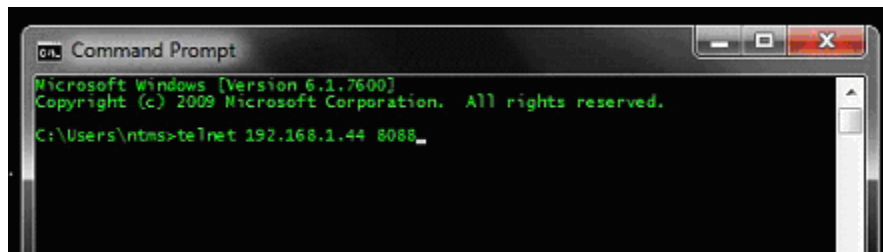
## 2. Testing Data Collection Manually through the Network

Once the configuration is complete we recommend manually testing the ability to make network temperature, CO2, O2, and humidity measurements by using the “Telnet” utility

from any PC. This commonly-used network utility sends simple network commands that will elicit readings from the HeraCell incubator. For more about debugging network connections see the appendix of the Tempurity System User's Guide.

On Windows 7,8,10 clients you may need to enable the Telnet utility as follows: 1 Start 2 Control panel 3 Programs 4 Turn Windows Features on or off 5 Check "Telnet Client" 6 Click Ok

1. From Windows click "START", then "RUN", and then type "CMD" and return.
2. At the black screen type "Telnet" + *IP Port* ( where *IP* is the IP address and *Port* is the network port address (e.g.8088) as selected by your use of the NTMS Configuration Wizard in screen 6 as described above.)



3. If you are successfully connected through the network you will see a blank screen.
4. Type a capital "T", "C", "O", or "H" the command characters for this device. A value for the associated query should be returned. Temperature, carbon dioxide, and oxygen concentration return trending values. "H" returns a status code (0 or 1) indicating whether a low humidity condition exists.

If a value is not returned, check network parameters, network ports, firewalls and connections and try again before attempting to configure data collection using the Tempurity System software.

## Operation

NTMS network hardware continually reads data from the Heracell Interface. Each reading takes about 5 seconds. The most recent values are available for network requests by the Tempurity System.

The #30044 model produces slightly different readings from the front panel in that the Tempurity readings are truncates where the instrument readings are rounded to the nearest tenths decimal place.

Temperature, carbon dioxide and oxygen readings are fully trending. The relative humidity reading is a status only and indicates only in a yes/no way whether a low humidity condition exists. A zero reading indicates normal humidity. A reading of one indicates that a low humidity condition exists.

An attempt to access oxygen concentrations when not supported by the unit will yield a -999.9 reading. On models with no "i" suffix humidity readings always yield 0. The Tempurity System should not be configured for continuous data collection from unsupported internal sensors that are not available for your incubator.

## Reference

### Communication

#### Data Rate of Incubator

57600 Baud (30031 and 30026)  
9600 Baud (30044)  
Data bits 8  
Parity none  
Stop bits 1  
Flow Control None

#### Interface Cable NR interface #30026 and #30044

##### DB9 male to RJ45 jack

|                                    |                                    |
|------------------------------------|------------------------------------|
| DB-9 Pin 1 = NTMS RJ45 pin 2 = DCD | DB-9 Pin 5 = NTMS RJ45 pin 4 = GND |
| DB-9 Pin 2 = NTMS RJ45 pin 5 = RD  | DB-9 Pin 6 = NTMS RJ45 pin 1 = DSR |
| DB-9 Pin 3 = NTMS RJ45 pin 6 = TD  | DB-9 Pin 7 = NTMS RJ45 pin 8 = RTS |
| DB-9 Pin 4 = NTMS RJ45 pin 3 = DTR | DB-9 Pin 8 = NTMS RJ45 pin 7 = CTS |

### Physical Specifications

#### #30026 and #30044

|         |                         |
|---------|-------------------------|
| Weight: | 56 grams (2.0 ounces)   |
| Length: | 67.22 mm (2.647 inches) |
| Width:  | 66.22 mm (2.607 inches) |
| Height: | 28 mm (1.102 inches)    |

#### #30031

|         |                         |
|---------|-------------------------|
| Weight: | 99.2 grams (3.5 ounces) |
| Length: | 95 mm (3.74 inches)     |
| Width:  | 67 mm (2.63 inches)     |
| Height: | 42 mm (1.65 inches)     |

### Unique IDs Product #30026 and #30044

*The electronic unique IDs are of the format:*

**36:0000:0000:0302 #30026 Heraeus 150i and 240i**  
**38:0000:0000:2102 #30044 Heraeus 150, 240, Cytomat**

*Where the first field indicates the product number, and the other characters indicate the sequential electronic ID of the unit. Electronic IDs can be read through a Windows computer using the Networked Robotics "Calibration Programmer and ID Unit" (Networked Robotics part number #30010) hardware through a USB connection.*

### Performance and Accuracy

*This product reports the values as that are obtained directly from the HeraCell incubator. These values correspond to the values that are displayed on the front panel of the instrument. Accuracy is per manufacturer's specifications. Follow the manufacturer's instructions for calibration.*

*This interface rounds data produced by the interface to the nearest 1 decimal point in order to match the front panel display of the incubator which also rounds values to the same precision.*

## **Networked Robotics Hardware Class**

*Products #30026 and #30044 are based on a version of the Networked Robotics' "Streamer Probe". Product #30031 is based on the Raspberry Pi™ processor board.*

### **Support**

If you need assistance with your Networked Robotics Interface to the Heraeus Heracell or Forma-4000-series class of incubators or other products, contact Networked Robotics by phone at 877-FRZ-TEMP (877-379-8367) or by email at [support@networkedrobotics.com](mailto:support@networkedrobotics.com)

Thermo Fisher Scientific and Heraeus are registered trademarks of Thermo Fisher Scientific Inc. Heracell and Vios are trademarks of Thermo Fisher Scientific. Networked Robotics Corporation is not affiliated with Thermo Fisher Scientific Inc. Raspberry Pi is a trademark of the Raspberry Pi foundation. Networked Robotics is not affiliated with the Raspberry Pi Foundation.