

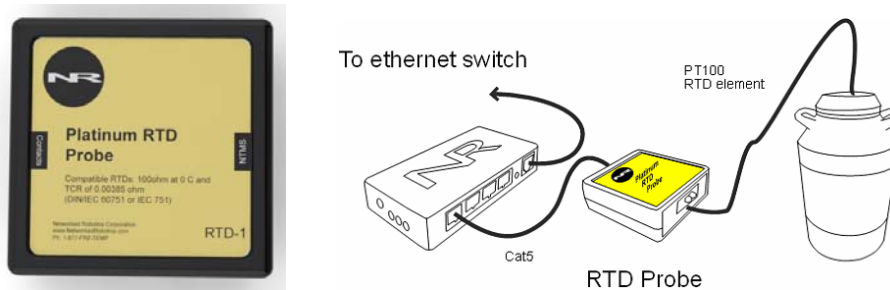


Networked Robotics Corp.  
825 Chicago Ave, Suite F  
Evanston, IL 60202, USA  
Tollfree: (877) FRZ-TEMP  
(877) 379-8367

General: info@networkedrobotics.com  
Technical: support@networkedrobotics.com  
Website: www.networkedrobotics.com

## Resistance Temperature Detector Probe, RTD-1 (#30014)

The Networked Robotics' Platinum RTD temperature probe collects extreme temperatures through standard computer networks. The probe is used in conjunction with the Networked Robotics NTMS (Network Telemetry Monitoring System) hardware and Networked Robotics' Tempurity™ System software. The Tempurity System is designed for data collection and monitoring in FDA-regulated environments including pharmaceutical, medical, and food industries.



### Description

Networked Robotics' RTD probes enable the remote monitoring of extreme temperatures, between -200 and 600 C, via standard computer networks. The unit must be used with a 100 ohm platinum (PT100) 3-wire element with an  $\alpha=0.00385$  curve. In most cases the RTD probe will be shipped with a temperature-sensing element; however there are a variety of compatible resistive temperature devices commonly available for use with this product and customers may prefer to make their own selection. The physical characteristics of the resistive temperature devices are important in determining the accuracy, range, and reliability of the measurement.

When RTD probe temperatures are reported through the Tempurity System, the temperature of the monitored device is reported to the nearest tenth of a degree Celsius.

### Packing List

This package includes the basic hardware you will need to connect the Resistance Temperature Detector (RTD) probe to the NTMS.

- (1) Resistance Temperature Detector Probe, RTD-1
- (1) CAT5E cable, RJ45 to RJ45
- (1) A PT100 .00385 resistive temperature detector

### Hardware Installation

There are three major steps in the installation of this hardware:

- 1) Physical installation
- 2) Configuration of the Networked Robotics NTMS hardware

### 3) Manual testing of data collection via the network

Each of these steps should be performed successfully before attempting to configure real-time data collection via the Tempurity System. Detailed information on configuring this monitored device through Tempurity is available in the Tempurity Systems User's Guide (Networked Robotics document number "Tempurity-04-0006.5") on the Networked Robotics web site.

## 1. Physical Installation

### Prerequisites

The customer should consult the manual for their monitored device (cryofreezer, oven, etc) to determine the location of the RTD Probe and the location of the element placement inside. The RTD Probe electronics are not designed to be subject to extreme temperatures and should be placed in a location removed from continuous exposure to liquid nitrogen or other extreme temperature sources. The RTD Probe electronics can be as far as 100 meters distant from the Networked Robotics NTMS network hardware and connections are easily extendable with CAT5 cable couplers thus you may wish to install the Networked Robotics NTMS hardware in a network closet, and then "patch" to the RTD via your company's network cable plant.

The placement of the sensor element, especially the vertical position, inside the monitored device can have an effect on the reading. Take care to select an appropriate position that will give a reading that reflects the temperature of the material that you are protecting.

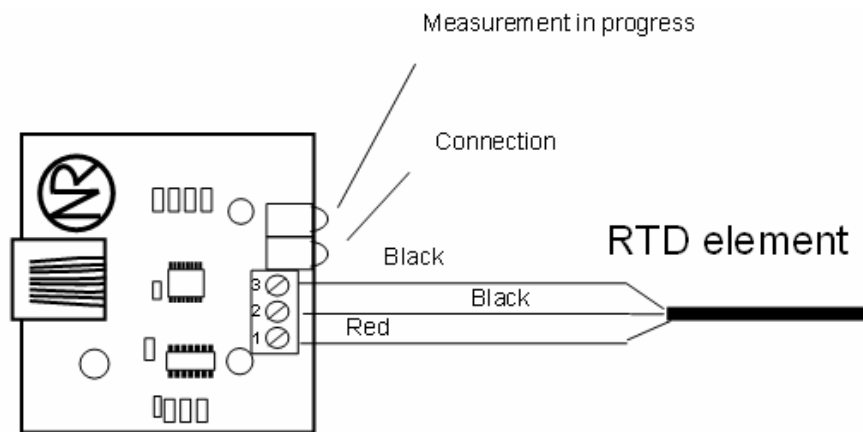
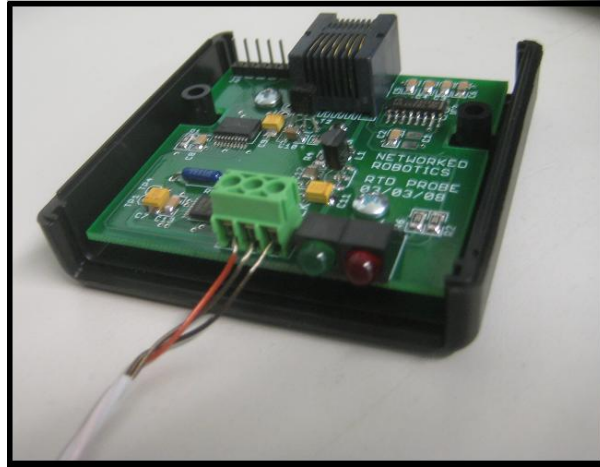
You will need both a small phillips-head, and a flat-blade screwdriver for installation

### Attaching the Probe

First turn the unit over and remove the two screws on the back, which hold the case together.



Next locate the green screw terminals at the bottom of the board. This is a three position screw terminal.



Resistance Temperature Detector (RTD) Probe

Most PT100 devices will have pre-stripped wires. If not, strip approximately ¼” of insulation from the wire. Insert the wires into the screw terminal, and tighten down with a small flat head screwdriver. If the RTD element has a shield, or extra conductors, do not connect them to the RTD Probe. You will want to pre-feed the element wire through the case end-panel before connecting the wires to the terminals.

Attach the red wire of the resistive temperature detector to the screw terminal labeled RED on the RTD board. This is the leftmost pin when facing the LEDs.

Attach either black wire of the element to one of the screw terminals labeled BLACK on the RTD board. This is either the center or rightmost pin when facing the LEDs.

Attach the other back wire of the element to the last screw terminal labeled BLACK on the RTD board.

Replace the cover and its screws to close the RTD Probe. You may need to thread the resistive element through the case end plate. Then use the provided CAT5E cable to connect the RTD to any of the four measurement probe ports on the NTMS. If needed, you can use a longer length of CAT5 cable. The maximum distance, however, should not exceed 100 meters.


### Verifying Connections


If the NTMS is powered up, and the CAT5E cable connection is made correctly between the RTD and the NTMS, the green LED on the RTD will illuminate. The red light will blink quickly ten times.

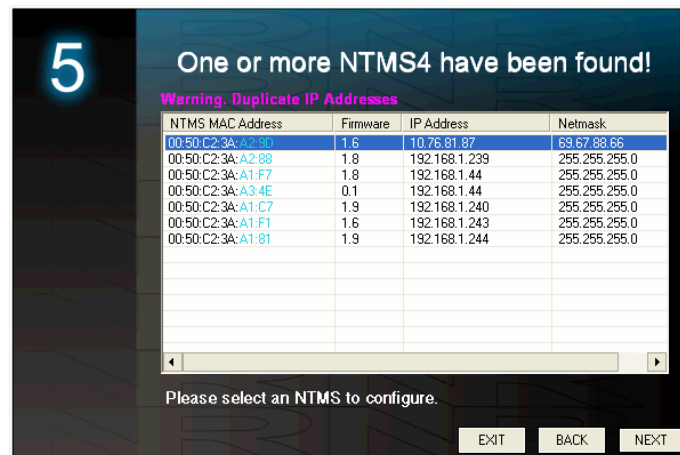
The green LED indicates that the unit is connected to the NTMS. If the NTMS measurement port is configured properly the red light will blink on and off at approximately 10 second intervals. The blinking of the red light indicates that a measurement has been made. The RTD Probe is capable of reporting new temperatures after the red light is activated. If the NTMS port is configured to the wrong monitored device type, the red light will never activate despite correct physical connection to the NTMS. See the instructions below to correctly configure the NTMS measurement port.

Secure the RTD unit to a convenient location using the dual-lock provided on the back. The dual-lock sticks best to metal or plastic surfaces. It may not adhere as well to surfaces such as drywall or wood, or to porous materials such as concrete.

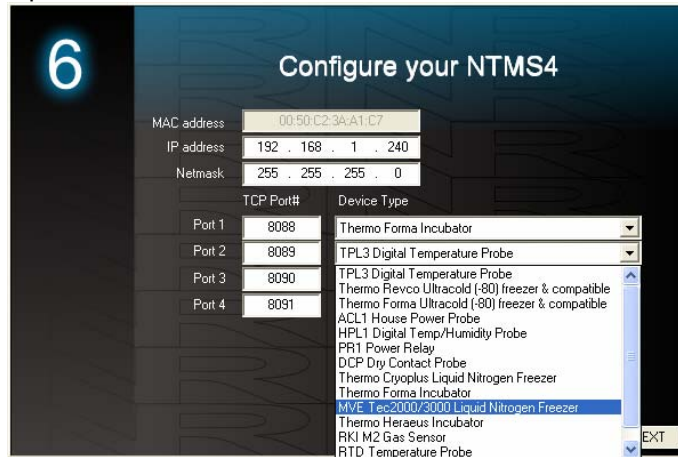
## 2. Configuring the NTMS

Configure your NTMS network hardware for data collection from this instrument. This is done by running the latest version of the NTMS Configuration Wizard  from any PC that is on the same subnet as the NTMS to be configured. You can obtain the configuration wizard from the “download” section of the Networked Robotics web page. New sensor and interface types are being added periodically to the wizard so the screens below may change.

1. Run the wizard from the same local area network as the NTMS and verify that the NTMS is discovered. (NTMS hardware must be running firmware revision 1.6 or higher. If it is not, stop the installation and upgrade your NTMS hardware’s firmware with the NTMS Upgrade Wizard  available from the Networked Robotics download-page.)



2. Select the NTMS, and proceed to the “NEXT” screen.
3. Enter the correct static IP address and subnet mask for your facility.
4. Click on the NTMS measurement port where the probe is connected, and under the “Device Type” drop down, select the RTD Temperature Probe option.



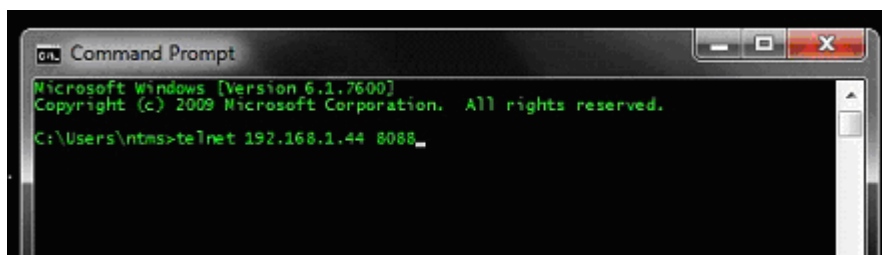
5. Click “NEXT” to complete the NTMS configuration.

### 3. Testing Data Collection through the Network

Once the configuration is complete we recommend testing the ability to make network temperature measurements by using the “Telnet” utility from any PC. This commonly-used network utility sends simple network commands that will elicit a reading from the RTD.

On Windows 7 clients you may need to enable the Telnet utility as follows: 1 Start 2 Control panel 3 Turn Windows Features on or off 4 Check “Telnet Client” 5 Click Ok

1. From Windows click “START”, then “RUN”, and then type “CMD” and return.
2. At the black screen type “Telnet” + *IP Port* ( where *IP* is the IP address and *Port* is the network port address (e.g.8088) as selected by your use of the NTMS Configuration Wizard in screen 6 as described above.)



3. If you are successfully connected through the network you will see a blank screen.
4. Type a capital “T”; the command character for this device. A temperature and the associated checksum value should be returned.

If a temperature is not returned, check network parameters, network ports, firewalls and connections and try again before attempting to configure data collection using Tempurity System software.

## **Operation**

During normal operation, the green LED on the RTD Probe will be on. The red LED will occasionally blink. The blink indicates an active temperature read by the NTMS. If the red LED does not blink periodically this is an indication that the configuration of the NTMS port is not correct for an RTD Probe, or if both lights are out, then the connection to the NTMS is lost and the cables or NTMS status (is the power unplugged?) should be checked.

Temperature reads are made at approximately ten second intervals. The Tempurity System reports the last-read temperature of the RTD to the Tempurity Server upon request.

## **Reference**

### **Unique IDs**

*All Networked Robotics hardware holds electronic globally unique IDs. RTD Probe IDs are of the format:*

**08:0000:0000:0002**

*Where 8 indicates the product number, and the other characters indicate the electronic ID of the unit. Electronic IDs can be read through a Windows computer using the "Probe ID Unit" (Networked Robotics part number #30010) hardware through a USB connection.*

### **Communications Specifications**

*The RTD communicates with the NTMS using RS-232 at 1200bps.*

*On the NTMS RJ45 jack the pins used are: 4 ground, 5 transmit to the RTD Probe, 6 send from the RTD Probe.*

### **Electrical Specifications**

*The RTD Probe derives its power from the regulated 5 volts DC supplied by the Networked Robotics NTMS hardware, so no external power supply is required.*

### **Physical Specifications**

*The version of the RTD Probe that you have, and what resistive temperature devices it can be used with should be clearly labeled on the top of your RTD.*

Weight:	59 grams (2.1 ounces)
Length:	67.22 mm (2.647 inches)
Width:	66.22 mm (2.607 inches)
Height:	28 mm (1.102 inches)

## **Support**

If you need assistance with your RTD Probe or other products, contact Networked Robotics by phone at 877-FRZ-TEMP (877-379-8367) or by email at [support@networkedrobotics.com](mailto:support@networkedrobotics.com)

## **Appendix: Accuracy Discussion**

The RTD-1 unit is designed to never require adjustment. This means, however, that there are sources of error for which there is no compensation.

### *ADC Noise*

The RTD-1 unit uses a 24 bit Delta-Sigma ADC from Analog Devices (AD7793), which is specifically designed for instrumentation applications. It includes an on-chip low noise instrumentation amplifier that allows small signals to be interfaced directly to the ADC. It does, however, still have noise which results an error range of approximately +/- .01 degrees Celsius.

### *The ADC Reference Resistor*

The 24-bit ADC uses a .1% precision 4.99Kohm reference resistor. This resistor can be as much as 5 ohms high or low.

If the RTD has a resistance of 100 ohms (about 0 Celsius), one would expect the raw ADC reading to be 1,344,867. Because of variation in the reference resistor, the ADC may actually read anywhere between 1,343,521 and 1,346,216. This results in the resistance measurement being anywhere between 99.900 and 100.100 ohms. This yields a potential error in the measured temperature of -0.26 to +0.26 Celsius. This range of uncertainty increases as the temperature goes up and the resistance of the RTD Probe increases.

### *The RTD*

RTD which comply with DIN-IEC Class B have an intrinsic error of +/- .012%. At 0 degrees Celsius, this results in resistance range of +/- 0.30 ohms and a temperature range of +/- 0.3 Celsius. As the temperature changes, the range increases as shown:

Temperature (Celsius)	Ohms	Degrees
-200	+/- 0.56	+/- 1.3
-100	+/- 0.32	+/- 0.8
0	+/- 0.12	+/- 0.3
100	+/- 0.30	+/- 0.8
200	+/- 0.48	+/- 1.3
300	+/- 0.64	+/- 1.8
400	+/- 0.79	+/- 2.3
500	+/- 0.93	+/- 2.8
600	+/- 1.06	+/- 3.3

### *The Callendar-Van Dusen Calculation*

The Callendar-Van Dusen Calculation is used to determine temperature value based on the resistances of the element. The internal calculation is switched from 5th order negative function to a positive function at 80 ohms or about -50C, where temperatures under this value are using the 5<sup>th</sup> order negative function. See the Analog Devices (AD7793) documentation for more information.