



Networked
Robotics

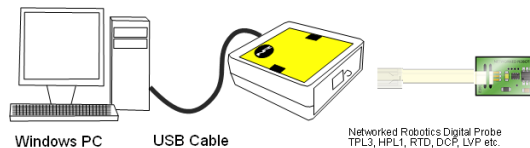
Digital Probe Calibration Programmer (#30010)



This product and the associated “Digital Probe Calibration Programmer Wizard” software facilitate the use of our digital sensors by 1) enabling data and metadata collection from Windows® computers rather than via our NTMS network hardware. They will be often used with laptops in laboratories. 2) by enabling the permanent storage of calibration data inside our digital sensors and the digital sensors of some compatible sensors.

These products are designed to enhance regulatory and operational support for the Tempurity™ System. Tempurity is engineered for data collection and monitoring in FDA-regulated environments including the pharmaceutical, medical, and food industries. This product also allows probe descriptive data, including electronically embedded unique IDs, and measured values such as temperature, relative humidity, voltage and other parameter types, to be solicited, stored, and transferred to other Windows applications such as Microsoft Excel®.

The “Digital Probe Calibration Programmer Wizard” software is downloaded from our web site.



Description

This product supports all Networked Robotics digital sensors and electronic interfaces as described below but does not support Networked Robotics’ interfaces, our direct connections to scientific instruments.

Calibration data can be stored inside and read from any Networked Robotics digital temperature probe manufactured since 2005 This product also works with some third-party digital temperature sensors manufactured by other vendors as described below.

About Networked Robotics' Unique IDs

Electronically embedded globally unique IDs are available in most of Networked Robotics' digital sensors. The IDs are assigned by different methods. This product supports the electronic reading of the following Networked Robotics probe types:

- TPL-3 series (Product #30001 and #300012) digital temperature probes - ID is assigned by Dallas-Maxim, the temperature-sensing chip manufacturer
- ACL/DCL-series (Product #30015 and others) digital power probe- ID is assigned by Dallas-Maxim
- HPL-1 (Product #30009) digital humidity and temperature probe – ID is assigned by NR
- DCP (Product #30008) dry contact probe – ID is NR-assigned
- RTD (Product #30014) resistance temperature detector probe – ID is NR-assigned
- LVP (Product #30019) low voltage probe – ID is NR-assigned
- PCU (Product #30010) digital probe calibration programmer– ID is NR-assigned
- MXQ (Product #30022) Thermo Fisher Scientific® MaxQ Incubator/Shaker interface– ID is NR-assigned

Networked Robotics' direct connection products to scientific instruments do not currently support electronically embedded unique IDs.

See the manual for each hardware product or interface for operational details.

Packing List

Included in the package are:

- (1) Digital Probe Calibration Programmer
- (1) USB Cable

Networked Robotics' probes for calibration or testing must be obtained separately.

Hardware Installation

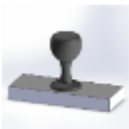
The Digital Probe Calibration Programmer connects to a PC using a USB 1.1 / USB 2.0 interface. Probes are connected to the programmer via the standard RJ-45 jack as shown in the diagram above.

This module should only be connected to personal computers, and the probe port should only be connected to Networked Robotics measurement probes of any type. Do not attempt to connect the Probe Calibration Programmer to any Ethernet connection or to Networked Robotics' NTMS network hardware

You must download the "Digital Probe Calibration Program Wizard" software, a Windows® application, from our download page at <https://www.networkedrobotics.com/download/>.

Installation of the USB driver is often an automatic process and is similar to the process of using other USB hardware.

If the Calibration program does not recognize the programmer, which could be the case on some attach the programmer via the USB port and reboot the computer and try again.



Networked Robotics' Digital Probe Calibration Programmer Wizard Software

Download the Software

Download the “Probe Calibration Programmer Wizard” software from the Networked Robotics web site at www.networkedrobotics.com/download and then click on the icon to download. Once downloaded double-click on the icon to run the wizard.

Using the Digital Probe Calibration Programmer Wizard Software

Connect one of your Networked Robotics sensors to the port labeled “probe” on the programmer. Some digital probes may require connections to their intended source in order for a valid ID to be read, for example the RTD probe requires a connection to a PT-100 RTD element. In general the probe must be ready for data acquisition in order for the ID, calibration data, and other information to be read.

The photo to the right shows CAT5 cable that is connected to a Networked Robotics RTD probe (RTD not shown). All of our digital probe products plug directly into the “probe” port of the Calibration Programmer.



Next, double click on the Digital Probe Calibration Programmer Wizard program icon. Follow the prompts. Then click on the “Query” button. The software will query your probe and display relevant ID, firmware version, and a current measurement. To refresh the information simply hit the “query” button again. To read from a new probe, unplug the existing probe, plug the new plug in, and hit the “query” button. If probes are not reading as expected you should exit the Calibration Programmer software and then restart the software and try again.

If the Wizard Software Can’t Find the Programmer

In some cases USB driver issues may require you to reboot the computer with the Calibration Programmer attached before you can run the software. See also the “USB Driver” section above.

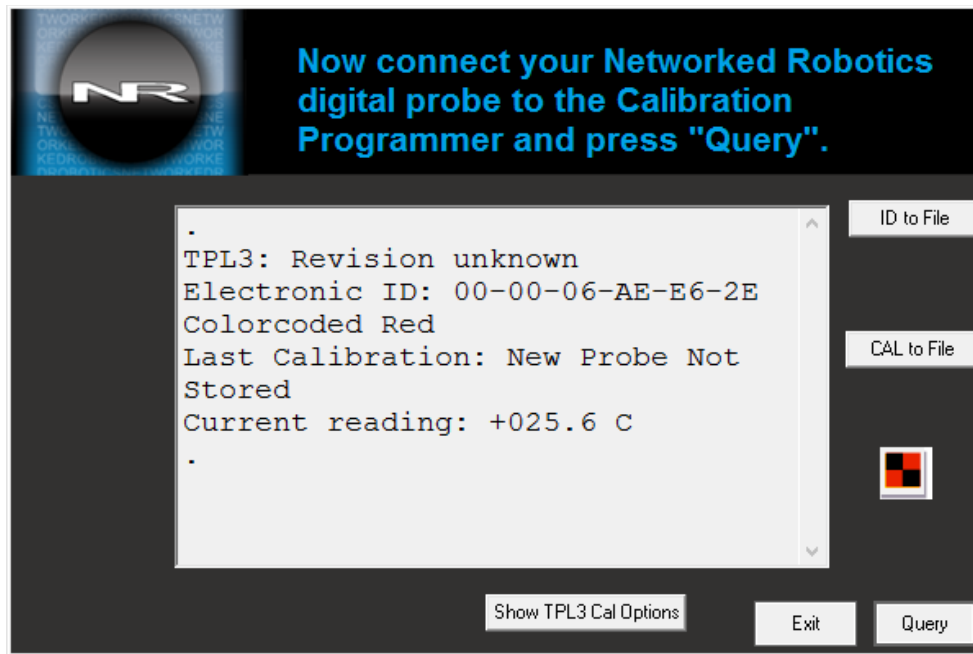


Reading from Probes

Some sample reports from relative humidity and alarm contact probes are:

```
HPL3 1.0: 25-Apr-07 21:54:00
Serial#:04:0000:0000:0101
Current reading: + 25.5 C, 52.9 %
```

DCP 1.0: 26-Jul-07 11:26:43
Serial#:07:0000:0000:100A

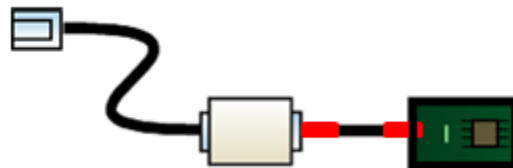






Transferring Embedded IDs to Excel or Other Applications

You can use your mouse to highlight any portion of the screen, including the probe embedded ID, or data values, and then right-click and choose the “Copy” option. You can then Paste into other applications, including Microsoft Excel®.

Color Coding

Networked Robotics’ digital probes are color coded by the last digit of their electronically embedded unique ID. Four examples are shown.



Last Digit of Electronic ID	Color	Last Digit of Electronic ID	Color
0 Green		8 Black	
1 Yellow		9 Dk Blue	

See [our support page on color codes](#) for a full list of all 16 possible color codes and the associated last digit of the Networked Robotics unique electronically embedded ID.

ID to File

When you click on the “ID to File” button the program will store the electronic ID for the probe currently visible in the window to the comma separated value file “probeids.csv” on the desktop. This file can be opened with Microsoft Excel® or other utilities.

If the “probeids.csv” file does not exist it will be created. If it does exist the new electronic ID will be appended to the last line of the existing file.

CAL to File

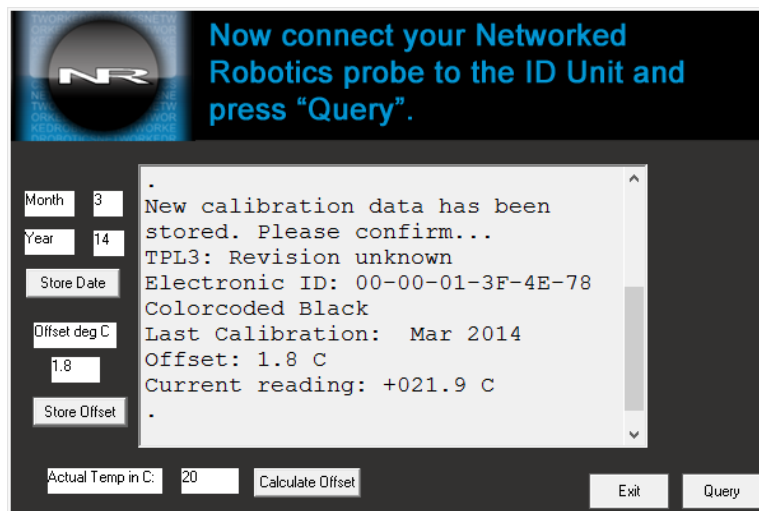
When you click on the “Cal to File” button the program will store the electronic ID for the probe currently visible in the window and all of its calibration information to the comma separated value file “caldata.csv” on the desktop. This file can be opened with Microsoft Excel® or other utilities. If the file doesn’t exist it will be created. If it exists the new information will be appended to the last line of the spreadsheet. Cal to File stores the ID, the calibration date, the stored temperature offset, and the current reading.

Calculating and Programming Electronic Calibration Data in Networked Robotics’ TPL3-series Digital Temperature Probes

The figure above shows a “query” from a TPL3-series digital temperature probe that is newly manufactured. A unique ID for TPL3-series probes is the electronic ID of the Dallas/Maxim chip used to measure temperature. The ID is assigned by Dallas/Maxim rather than by Networked Robotics.

For a new probe the “New Probe not Stored” indicator is listed for the calibration date. No last calibration date has been entered yet for this digital sensor. Once calibration data is programmed, the unit can never be restored to “New Probe not Stored” status.

The below shows the probe query once calibration data has been stored.



The screenshot shows a software window titled "Now connect your Networked Robotics probe to the ID Unit and press 'Query'". The window has a dark background with a logo on the left. On the left side, there are input fields for "Month" (3), "Year" (14), "Store Date", "Offset deg C" (1.8), and "Store Offset". At the bottom left, there is a field for "Actual Temp in C:" (20) and a "Calculate Offset" button. On the right side, there is a large text area displaying the following information: "New calibration data has been stored. Please confirm...", "TPL3: Revision unknown", "Electronic ID: 00-00-01-3F-4E-78", "Colorcoded Black", "Last Calibration: Mar 2014", "Offset: 1.8 C", and "Current reading: +021.9 C". At the bottom right, there are "Exit" and "Query" buttons.

Automatically Calculating Temperature Offset

The offset of the calibration can be calculated automatically. To do this enter the ambient temperature to which the probe is currently exposed (for example 0.1) in the field “Actual Temp

in degrees C". The offset is automatically calculated from the last reading as indicated by the "Current Reading:" line of the display window. A previous "query" must have been executed in order for the offset to be calculated. The calculated offset is entered into the field based on the last query and the actual temperature.

Troubleshooting

In some cases, the Calibration Programmer may lose connection when one of the connected probes is wired improperly. Disconnect the probe, unplug the programmer from the computer, and restart the Calibration Programmer software.

Reference

Probe Serial Numbers and Firmware Revision

The format of the serial number varies slightly between Networked Robotics' device types. Probes with firmware are also capable of reporting their revision numbers and date of compilation to the unit.

Digital Temperature Probes TPL-3-series probes contain hexadecimal serial numbers of the form: XX-XX-XX-XX-XX-XX-XX, where XX is an 8 bit hexadecimal number from 00 to FF. TPL3-series probes do not have a firmware revision number, so "Revision unknown" will be displayed. This is normal and not a cause for alarm.

Digital Power Probes ACL and DCL-series probes contain hexadecimal serial numbers of the form: XX-XX-XX-XX-XX-XX-XX, where XX is an 8 bit hexadecimal number from 00 to FF. These probes do not have a firmware revision number, so "Revision unknown" will be displayed.

Digital Humidity/Temperature Probes (HPL) have hexadecimal based serial numbers very similar to the DCP. They are of the form: 06:XXXX:XXXX:XXXX, where XXXX is a 16 bit hexadecimal number from 0000 to FFFF

Dry Contact Probes (DCP) have hexadecimal based serial numbers of the form: 07:XXXX:XXXX:XXXX, where XXXX is a 16 bit hexadecimal number from 0000 to FFFF.

Resistive Temperature Detector Probes (RTD) have hexadecimal based serial number of the form 08:XXXX:XXXX:XXXX, where XXXX is a 16 bit hexadecimal number from 0000 to FFFF.

Low Voltage Probes (RTD) have hexadecimal based serial number of the form 0A:XXXX:XXXX:XXXX, where XXXX is a 16 bit hexadecimal number from 0000 to FFFF.

Digital Probe Calibration Programmers (PCU) do not have unique IDs.

MaxQ Interface version of NR Streamer Probe: have hexadecimal based serial numbers of the form: 0B:XXXX:XXXX:XXXX, where XXXX is a 16 bit hexadecimal number from 0000 to FFFF.

As new probe types become available from Networked Robotics, IDs will follow the form: YY:XXXX:XXXX:XXXX as above where YY is the probe type and the Xs are serial number digits in hexadecimal form.

Product History

This unit was formerly called the "Probe ID Unit". Previous versions were able to read the unique IDs in our digital probes and were able to elicit readings, but were not designed to program probes with calibration data. The current product will program all Networked Robotics TPL3 digital temperature probes ever sold by Networked Robotics Corporation.

Compatibility with non-Networked Robotics Measurement Products

The Networked Robotics' Probe Calibration Programmer hardware is capable of storing calibration data and reading electronic IDs from probes manufactured by Embedded Data Systems™.

Physical Specifications

Weight:	56 grams (2.0 ounces)
Length:	67.22 mm (2.647 inches)
Width:	66.22 mm (2.607 inches)
Height:	28 mm (1.102 inches)

Support

If you need assistance with your Digital Probe Calibration Programmer, contact Networked Robotics by phone at 877-FRZ-TEMP (877-379-8367) or by email at support@networkedrobotics.com.