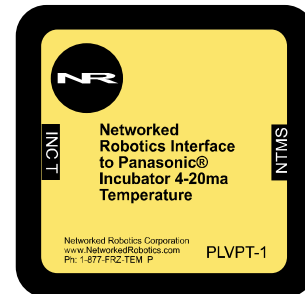
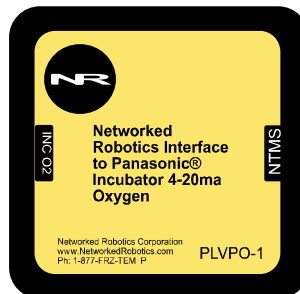
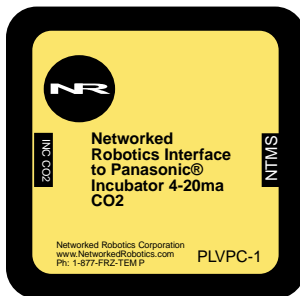




Networked
Robotics

Interfaces to Panasonic® and Sanyo® Biomedical Incubators (#30035 - #30037)

These products enable the remote data collection of temperature, oxygen, and carbon dioxide concentration from Panasonic® and Sanyo Biomedical® incubators via standard computer networks. The products are designed to be used in conjunction with the Networked Robotics NTMS4 (Network Telemetry Monitoring System) hardware and with Networked Robotics Tempurity™ System software. Tempurity is designed for network-based data collection and monitoring of real-time scientific data in FDA-regulated environments.



Description

As shown in the figure above, the “NTMS” side of the Panasonic Incubator 4-20 ma interface connects to one of the four measurement ports of the NTMS and the other connector is attached to the appropriate incubator 4-20 ma outputs via a pair of wires. The incubator must have been enabled for 4-20ma output via optional Panasonic part number MCO-420MA.

Versions

Product versions are differentiated only by the parameter obtained. Each must be connected to the appropriate output of the incubator.

Product Number

- #30035 Temperature
- #30036 Carbon Dioxide
- #30037 Oxygen

Packing List

This package includes the basic hardware you will need to connect the Panasonic Incubator 4-20 ma Interface to the NTMS.

- (1) Panasonic Incubator 4-20 ma Interface

- (1) Set of Connection Wires
- (1) CAT5E Cable
- (1) RJ45 Coupler for Extensions

Data Collection from Any Combination of Monitored Devices

Because each NTMS4 unit has 4 “universal” measurement ports, data from any combination of Networked Robotics interfaces to scientific instruments and sensors can be collected with a single unit. To collect all three reported Panasonic incubator parameters three NTMS ports are required.

Installation

The Networked Robotics Panasonic Incubator Interfaces are attached to a 4-20 milliamp source and to the Networked Robotics NTMS network hardware. There are three major steps in the installation of this product:

- 1) Physical installation
- 2) Configuration of Networked Robotics NTMS hardware to which the data source is attached
- 3) Manual testing of data collection via the network

Each of these steps should be performed successfully before attempting to configure and monitor real-time data via the Tempurity System. Detailed information on configuring data collection in Tempurity is available in the Tempurity Systems User's Guide (Networked Robotics document number “Tempurity-04-0006.5”) on the Networked Robotics web site.

1. Physical Installation

Data/Electronic Connections

This product can be installed as far as 100 meters from the Networked Robotics NTMS network hardware and connections are easily made and extended with CAT5 cable and the included couplers. You may wish to install the Networked Robotics NTMS hardware in a network closet, and then “patch” to this product at the monitored site via your company's network cable plant.

The unit should not be subjected to extreme environmental ranges and should be placed in a location removed from possible exposure to high temperature, liquids, or other harsh environmental conditions.

Connect this product to one of the four ports of an NTMS using the CAT5 cable. Check that the NTMS is powered on, and verify that the data collection port is set properly for data collection from Temp:DCP (see below).

If the NTMS is powered on, and the CAT5E cable connection is made correctly between this product and the NTMS, the yellow LED will illuminate while it does an internal calibration. Then it will go out when it is ready to be polled. Every time the Incubator Interface probe is polled by the NTMS, the LED will come on briefly.


Secure the unit to a convenient permanent location using the dual-lock provided on the back. The dual-lock sticks best to metal (except aluminum) or plastic surfaces. It may not adhere as well to surfaces such as drywall or wood, or to porous materials such as concrete. The probe can be removed from its dual-lock base for maintenance or cleaning.

Connections


Attach the purple wire to the 4-20 ma (+) and the orange wire to the (-) of the relevant parameter. Attach the Panasonic Interface CAT5 cable to one of the four data collection ports of the NTMS.

2. Configuring the NTMS Physical Port for the Appropriate Data Collection Type

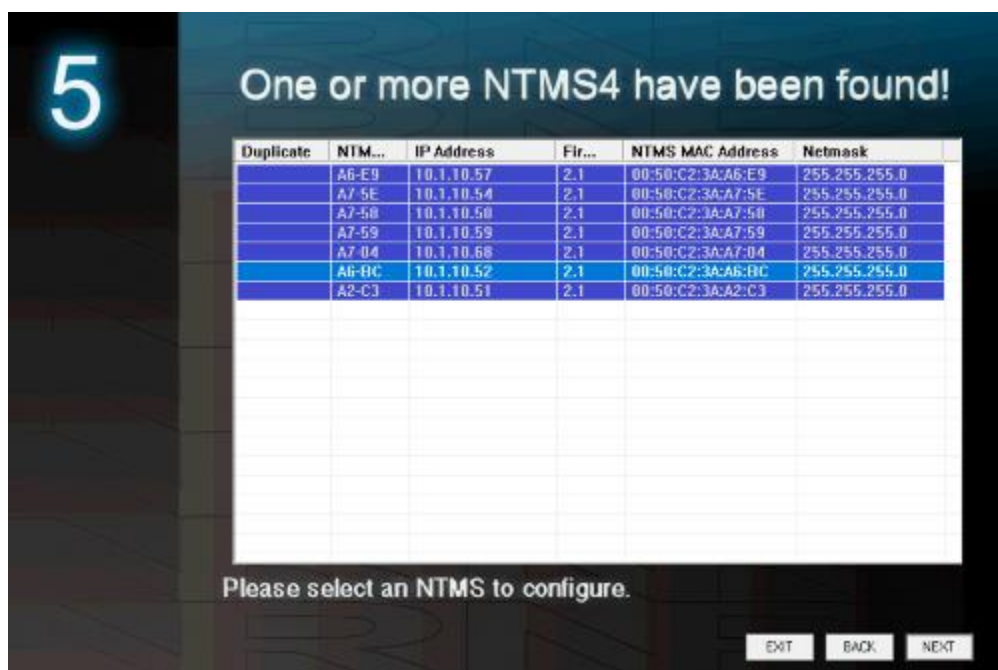
Configure your NTMS network hardware for data collection from this type of instrument.

This is done by running the latest version of the NTMS Configuration Wizard  from any PC that is on the same subnet (behind the same router) as the NTMS to be configured. You can obtain the configuration wizard from the “download” section of the Networked Robotics web page. New sensor and interface types are being added periodically to the wizard so the screens below may change.

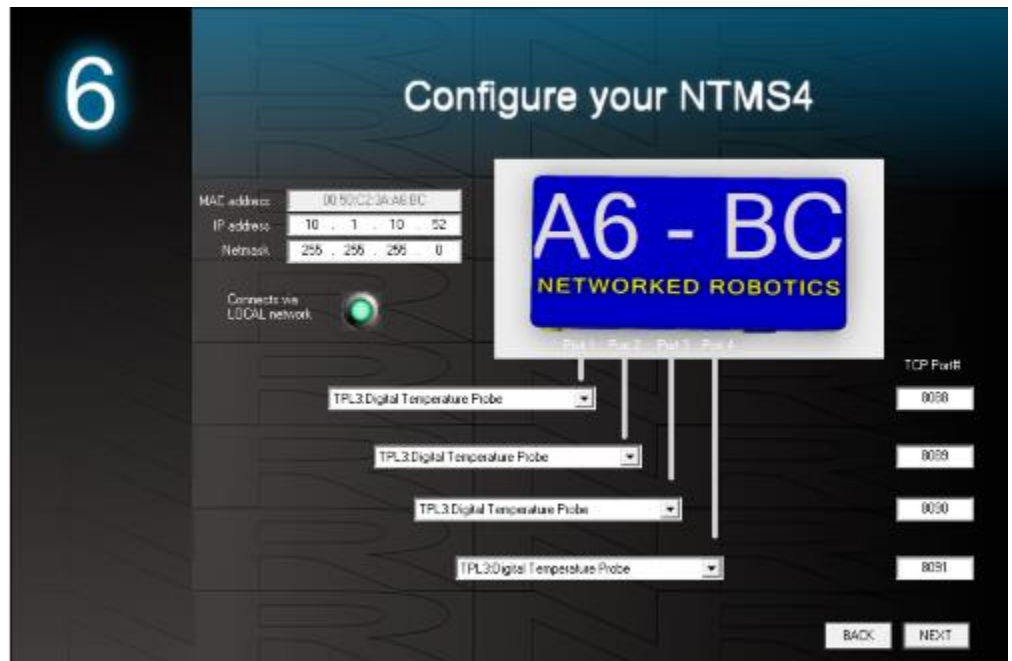
1. Run the wizard and verify that the NTMS to which the interface is attached is discovered. This NTMS must be running firmware revision 2.0 or higher. If it is not, stop the installation and upgrade your NTMS hardware’s firmware with the

NTMS Upgrade Wizard  available from the Networked Robotics download-page. There are special precautions needed when upgrading an NTMS running firmware version 1.x to firmware version 2.0 or higher.

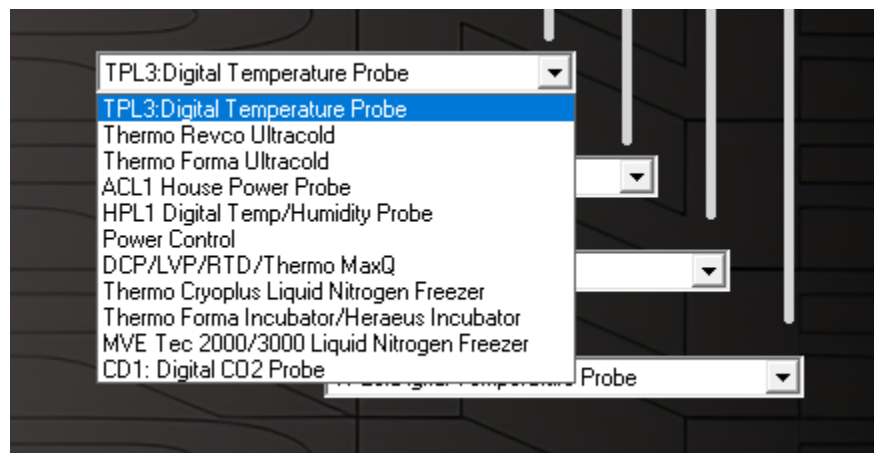
- 2.



3. Select the NTMS to which the interface is attached and proceed to the “NEXT” screen. (IP addresses must be set properly for your institution. If you are uncertain about the IP address to use, check with your network administrator.)



4. Click on the drop-down for the physical port on the NTMS where the probe is connected, and under the “Device Type” drop down, select DCP/LVP/RTD.



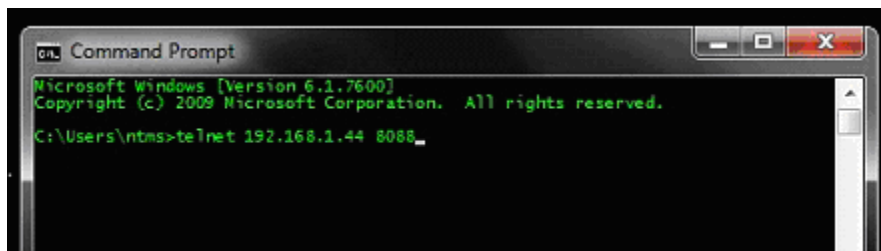
3. Testing Data Collection through the Network

Once the configuration is complete, we recommend manually testing the ability to make network temperature measurements by using the common “Telnet” utility. This can be done from any networked computer with access to the NTMS network hardware.

Telnet is included with Windows but you may need to activate it. On Windows 10 and 11 computers activate the Telnet utility as follows: 1 Start 2 Control panel 3 Programs 4 Turn Windows Features on or off 5 Check “Telnet Client” 6 Click Ok

1. From the Windows Command Prompt. On some Windows versions click the Windows key (start), then type "CMD", and then click on the command prompt.
2. At the black screen type "Telnet" + *IP Port* (where *IP* is the IP address and *Port* is the network port address (e.g.8088) as selected by your use of the NTMS Configuration Wizard in screen 6 as described above.)

For example "Telnet 10.1.200.3 8088"



3. If you are successfully connected through the network you will see a blank screen.
4. Type a capital "T" the command character for this probe. A temperature and the associated checksum value should be returned.

Failure to connect indicates a network problem. An "error" message indicates a problem in the connection at the instrument. If a temperature is not returned, check network parameters, network ports, firewalls and connections and try again. It is best to confirm successful network data collection using Telnet before attempting to configure data collection in the Tempurity System.

For more about debugging network connections to probes see the appendix of the Tempurity System User's Guide.

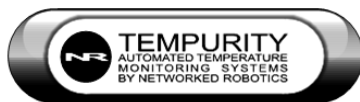
For use with the Tempurity System, you will need to add the network address (IP address and network port address) of the new monitored device (the Panasonic incubator parameters) to the Tempurity Server configuration. See the Tempurity System User's Guide section on server configuration for more information.

The control character for this interface is "T" for all products.

Configuring Data Collection in the Tempurity Server

Configuration Utility

Use of this product for CO₂ and O₂ requires the definition of a monitored device of type "Custom" in the Tempurity Server Configuration Utility. See the Tempurity System User's Guide, especially pages 38 and 39 of the Version 2 User's Guide (NR Document Number Tempurity 04 0006.5) and the section on Tempurity Server configuration for more information. The control character to acquire temperature, CO₂, or O₂ from this product is "T". The figure below shows how a Networked Robotics pressure probe is configured. In the case of these interfaces the value type would be carbon dioxide or CO₂ for example and the units would be %. Oxygen is similarly configured. Temperature can use the standard "Temperature" device type.



Operation

The Networked Robotics' NTMS network hardware continually reads values from the incubator at approximately 4 second intervals. The most recent value collected by the NTMS is available for network requests by the Tempurity System which by default collects remote data at one minute intervals.

During normal operation, the yellow LED will occasionally blink. The blink indicates an active data read by the NTMS. If the yellow LED does not activate, either the configuration of the NTMS port has been changed and is no longer correct or the connection to the NTMS is lost and the cables or NTMS status should be checked.

Reference

Power Supply

The unit derives its power from the regulated 5 volts DC supplied by the Networked Robotics NTMS hardware. It requires no external supply.

Unique IDs

All Networked Robotics hardware holds electronic globally unique IDs. The IDs for these products – a version of the Networked Robotics Low Voltage Probe - are of the format:

0A:0000:0000:0302

Where A indicates the product number, and the other characters indicate the electronic ID of the unit. Electronic IDs can be read through a Windows computer using the Networked Robotics "Calibration Programmer and ID Unit" (Networked Robotics part number #30010) hardware through a USB connection.

Physical Specifications

Weight:	65 grams (2.3 ounces)
Length:	77.22 mm (3.040 inches)
Width:	66.22 mm (2.607 inches)
Height:	48 mm (1.890 inches)

Performance and Accuracy

The measurement capability of this product is a combination of the accuracy produced by Panasonic Incubator's 4-20 ma interface and the accuracy of our voltage sensor. Formal NIST-traceable calibration should be sought in regulatory environments. Tempurity System software can adjust readings to maximize accuracy according to calibration results if needed.

Support

If you need assistance with your Networked Robotics Interfaces to Panasonic Incubators or other products, contact Networked Robotics by phone at 877-FRZ-TEMP (877-379-8367) or by email at support@networkedrobotics.com

Windows is a registered trademark of Microsoft Corporation. Dual lock is a registered trademark of 3M. Panasonic is a registered trademark of Panasonic Corporation. Sanyo is a registered trademark of Sanyo Electric Co. All marks are property of their respective owners Networked Robotics Corporation is not affiliated with Panasonic, Sanyo or Sanyo Biomedical, Microsoft Corporation, or 3M.